

CPS 9698/2 - Map B

121°52'48"E

121°55'12"E

18°36'0"S

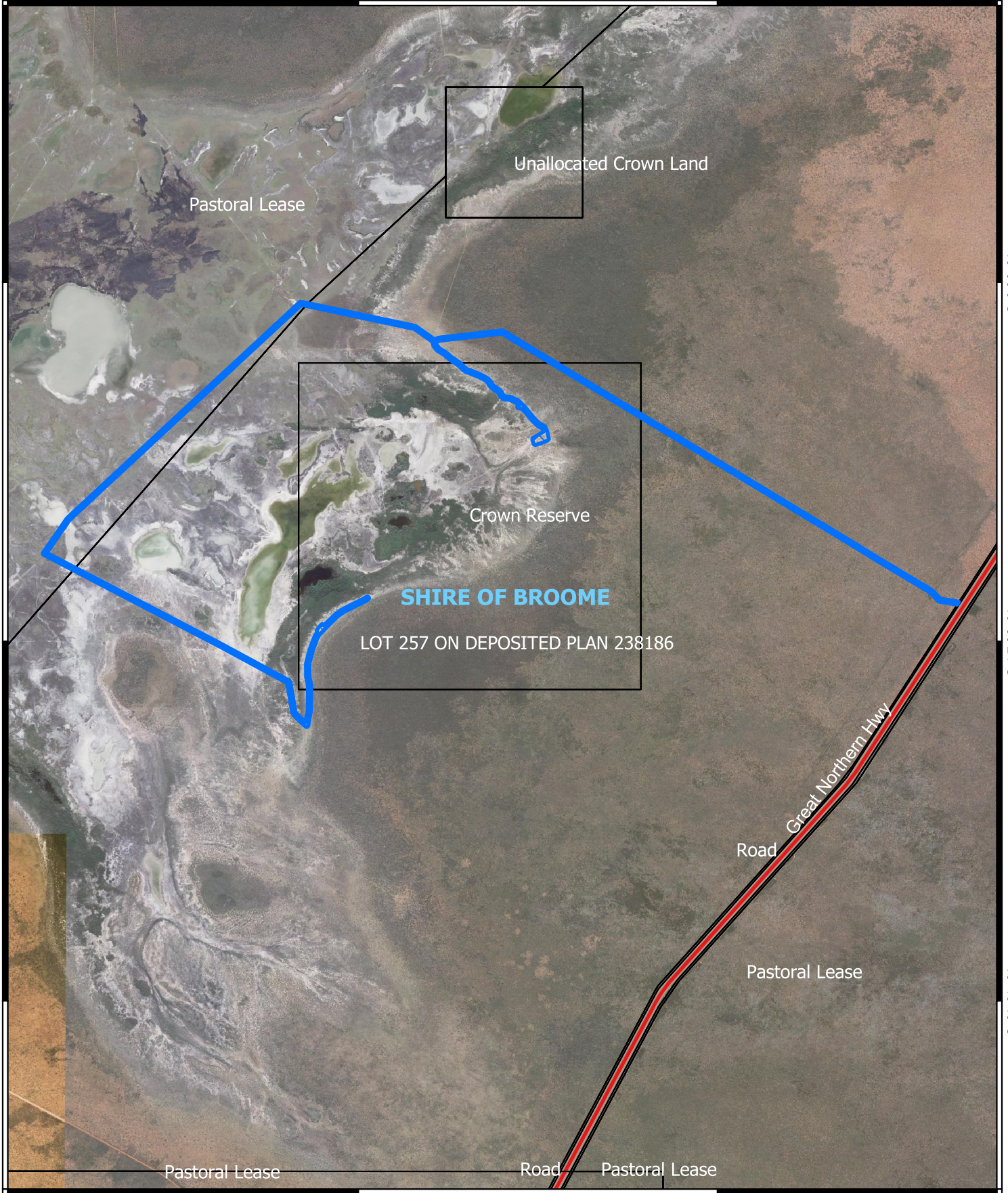
18°36'0"S

18°38'24"S


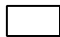

18°38'24"S

18°40'48"S


18°40'48"S

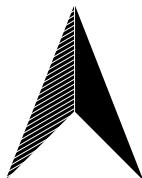


Legend

-  CPS areas applied to clear
-  Land Tenure (LGATE_226) - SLIP
-  Local Government Authorities

Roads

-  National Highway



0 1,000 2,000 3,000 m



Projection: GDA 2020

1:50,000



GOVERNMENT OF
WESTERN AUSTRALIA